



## 15 Warren Street

, Horden, SR8 4NA

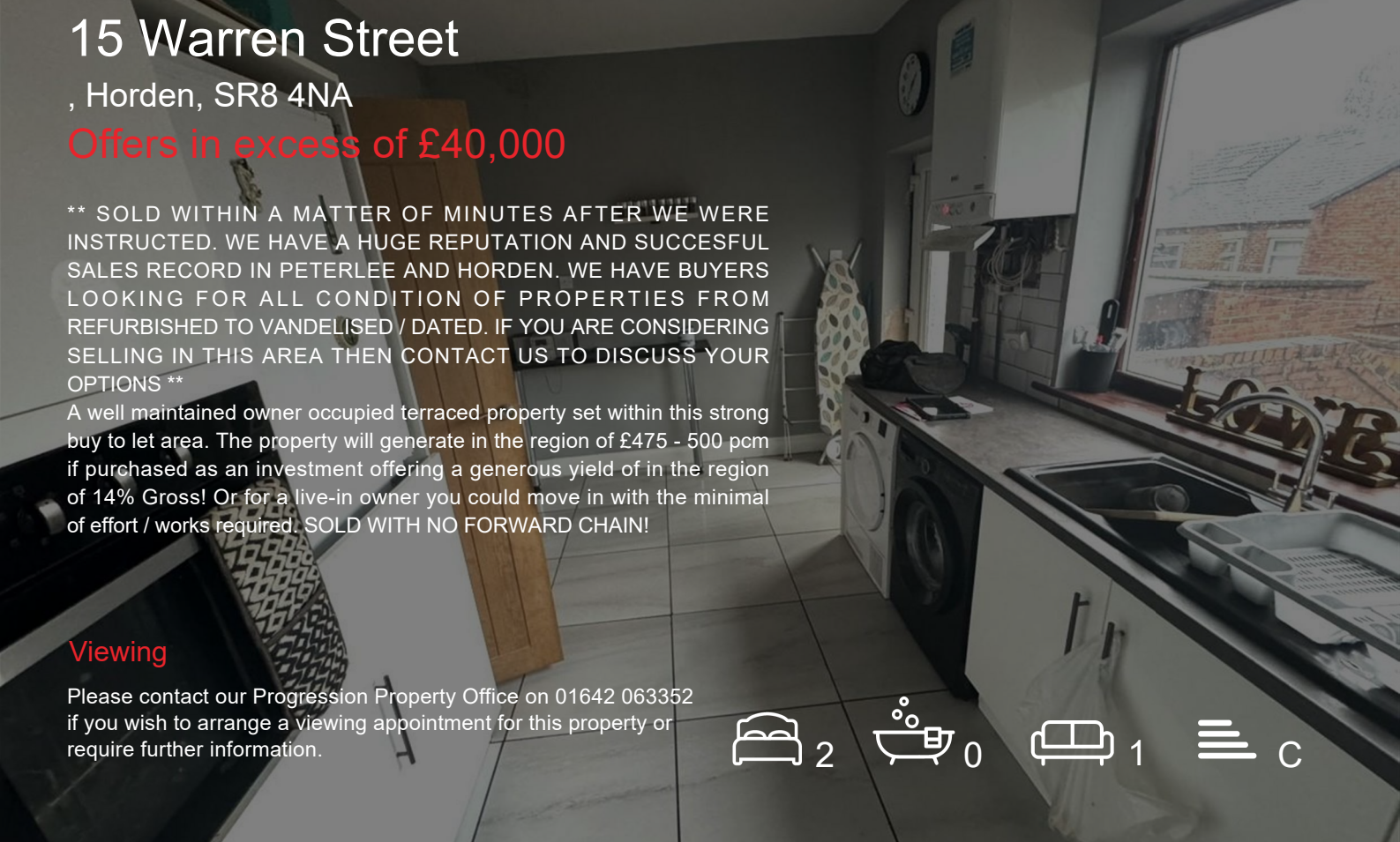
**Offers in excess of £40,000**

**\*\* SOLD WITHIN A MATTER OF MINUTES AFTER WE WERE INSTRUCTED. WE HAVE A HUGE REPUTATION AND SUCCESSFUL SALES RECORD IN PETERLEE AND HORDEN. WE HAVE BUYERS LOOKING FOR ALL CONDITION OF PROPERTIES FROM REFURBISHED TO VANDELISED / DATED. IF YOU ARE CONSIDERING SELLING IN THIS AREA THEN CONTACT US TO DISCUSS YOUR OPTIONS \*\***

A well maintained owner occupied terraced property set within this strong buy to let area. The property will generate in the region of £475 - 500 pcm if purchased as an investment offering a generous yield of in the region of 14% Gross! Or for a live-in owner you could move in with the minimal of effort / works required. **SOLD WITH NO FORWARD CHAIN!**

### Viewing

Please contact our Progression Property Office on 01642 063352 if you wish to arrange a viewing appointment for this property or require further information.



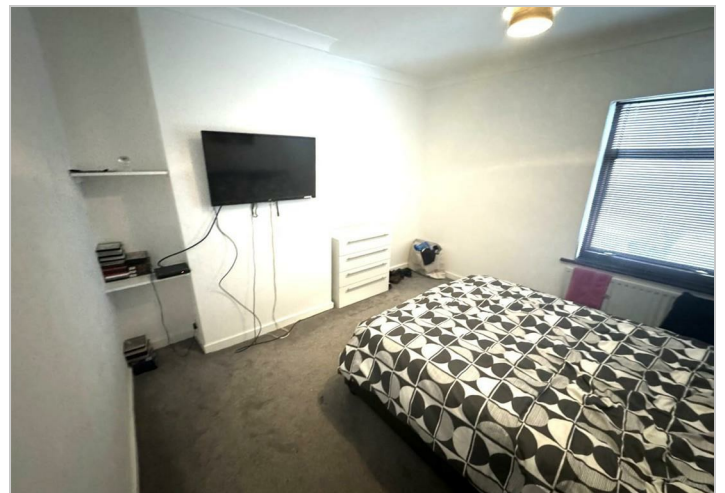
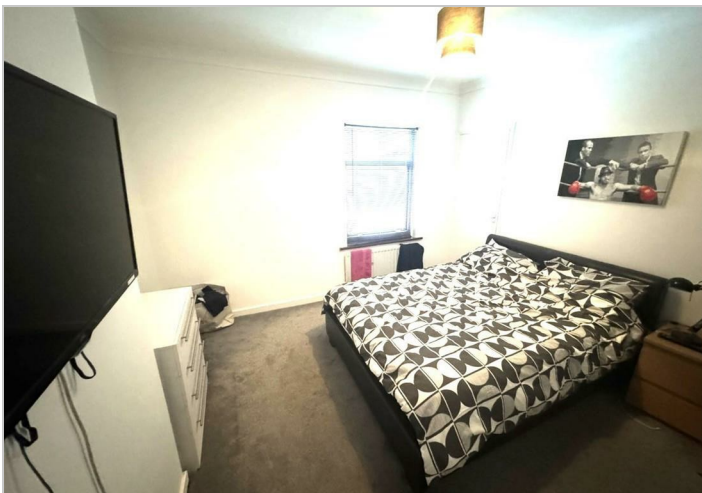
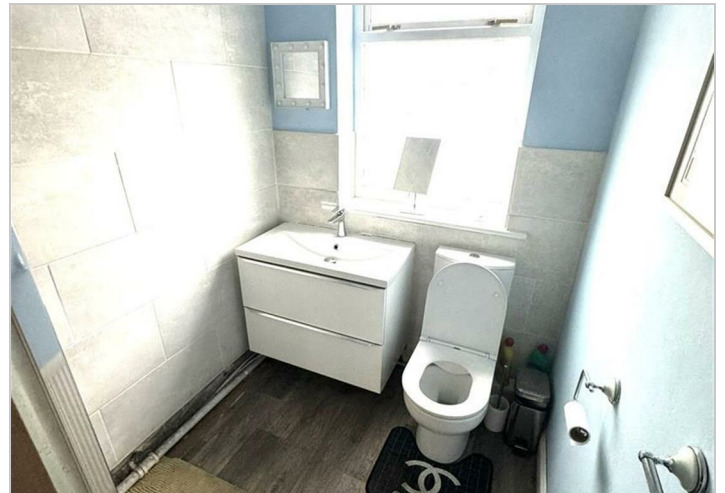
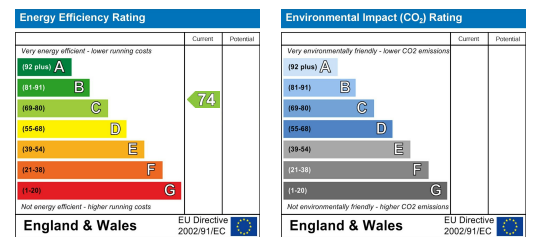
## Floor Plan



## Area Map



## Energy Efficiency Graph



These particulars, whilst believed to be accurate are set out as a general outline only for guidance and do not constitute any part of an offer or contract. Intending purchasers should not rely on them as statements of representation of fact, but must satisfy themselves by inspection or otherwise as to their accuracy. No person in this firm's employment has the authority to make or give any representation or warranty in respect of the property.